



Íslenskur vinnumarkaður

Febrúar 2011
Karl Sigurdsson

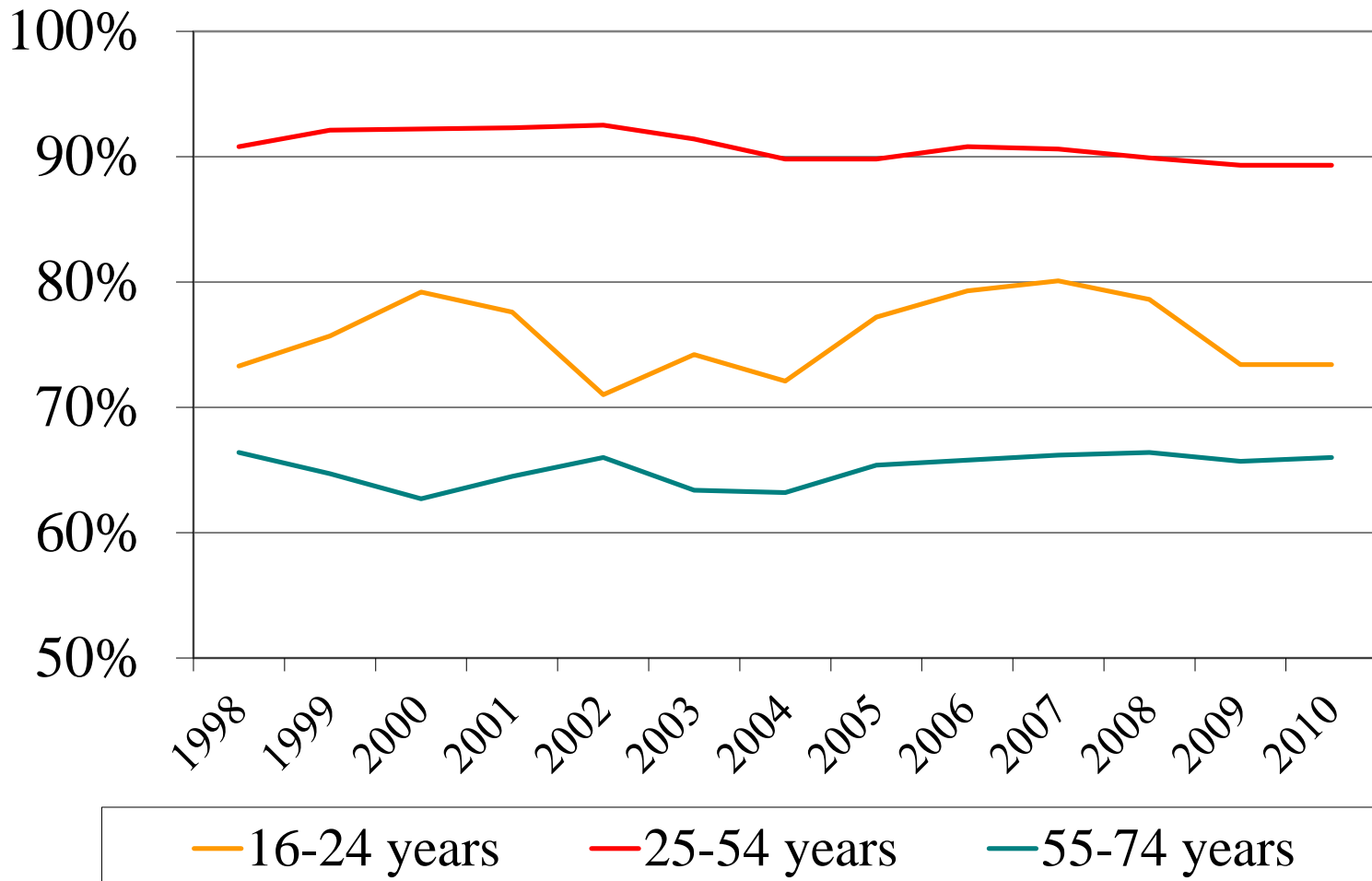


VINNUMÁLA
STOFNUN

Vinnumarkaðurinn 2010 (2009 innan sviga)

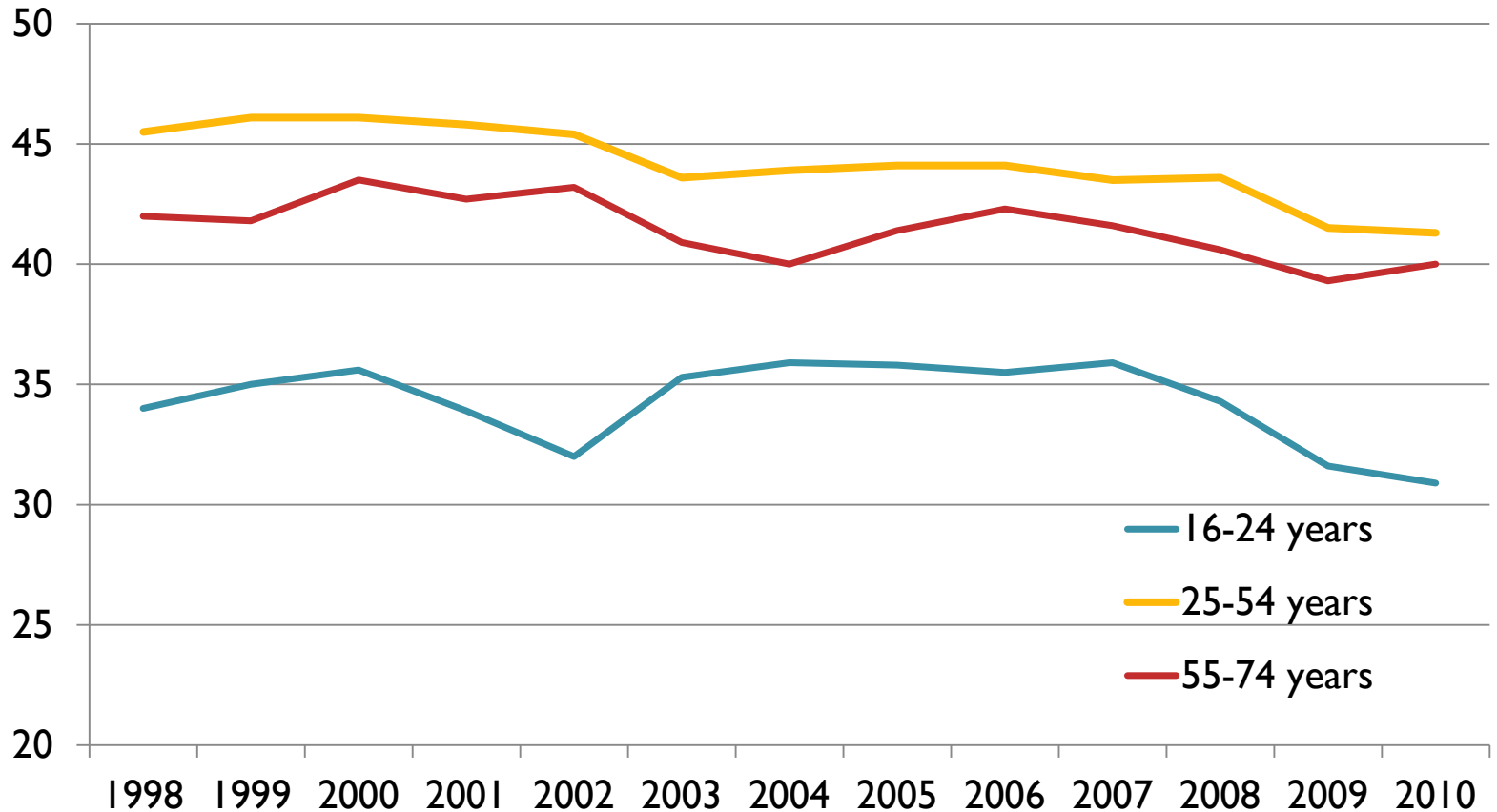
Fjöldi á vinnualdri	Um 220.000
Vinnuafli (16-74)	181.000 (180.900)
Atvinnuþátttaka	81,1% (80,9%)
Meðalfjöldi atvinnulausra	13.700 (13.100)
Atvinnuleysi	7.6% (7.2%)
Vinnutími að jafnaði á viku	39.5 (39.6)
Vinnutími fullvinnandi	44.8 (44.8)

Þróun atvinnuþátttöku eftir aldri



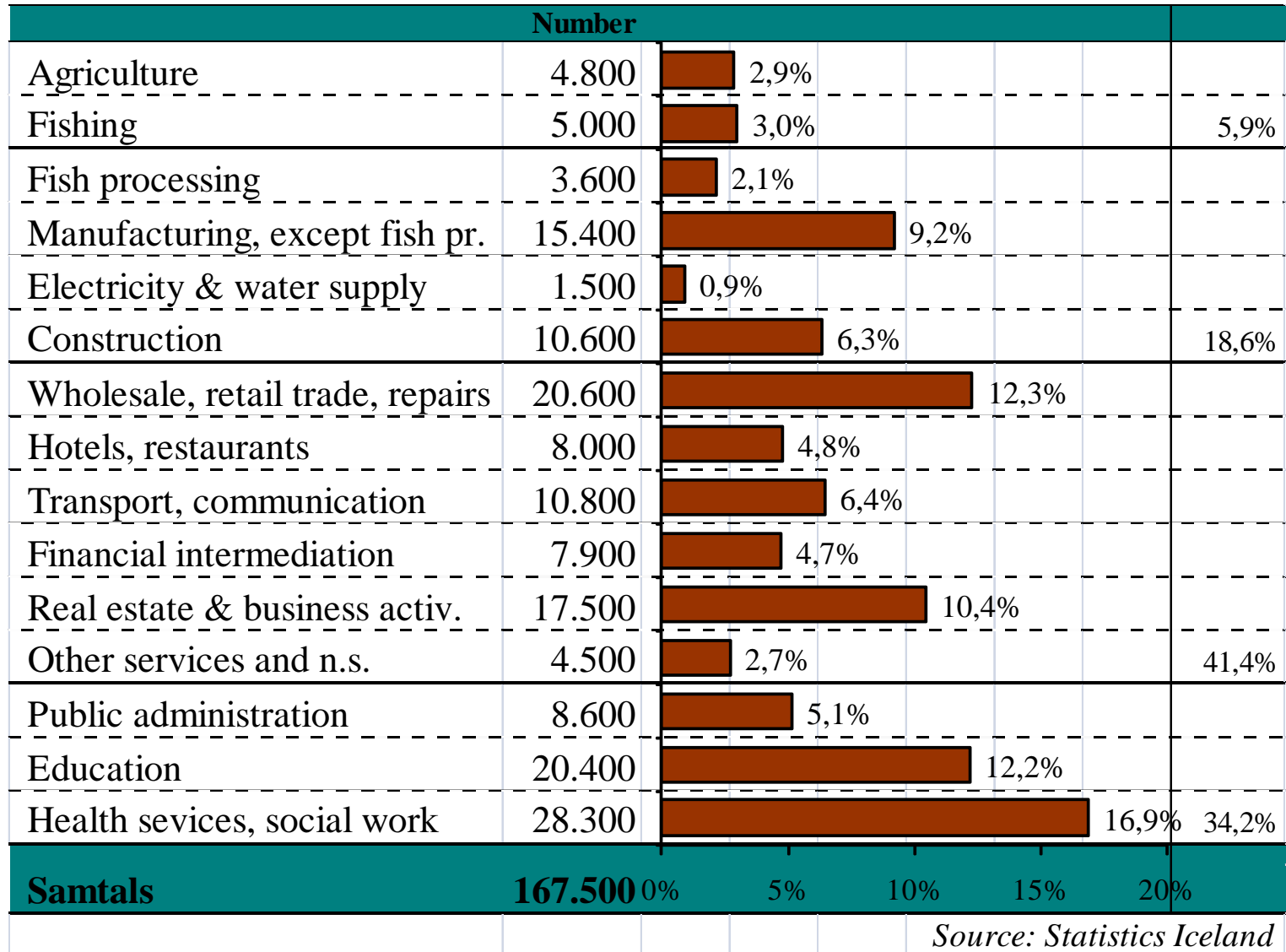
Source: Statistics Iceland

Þróun vinnutíma eftir aldri



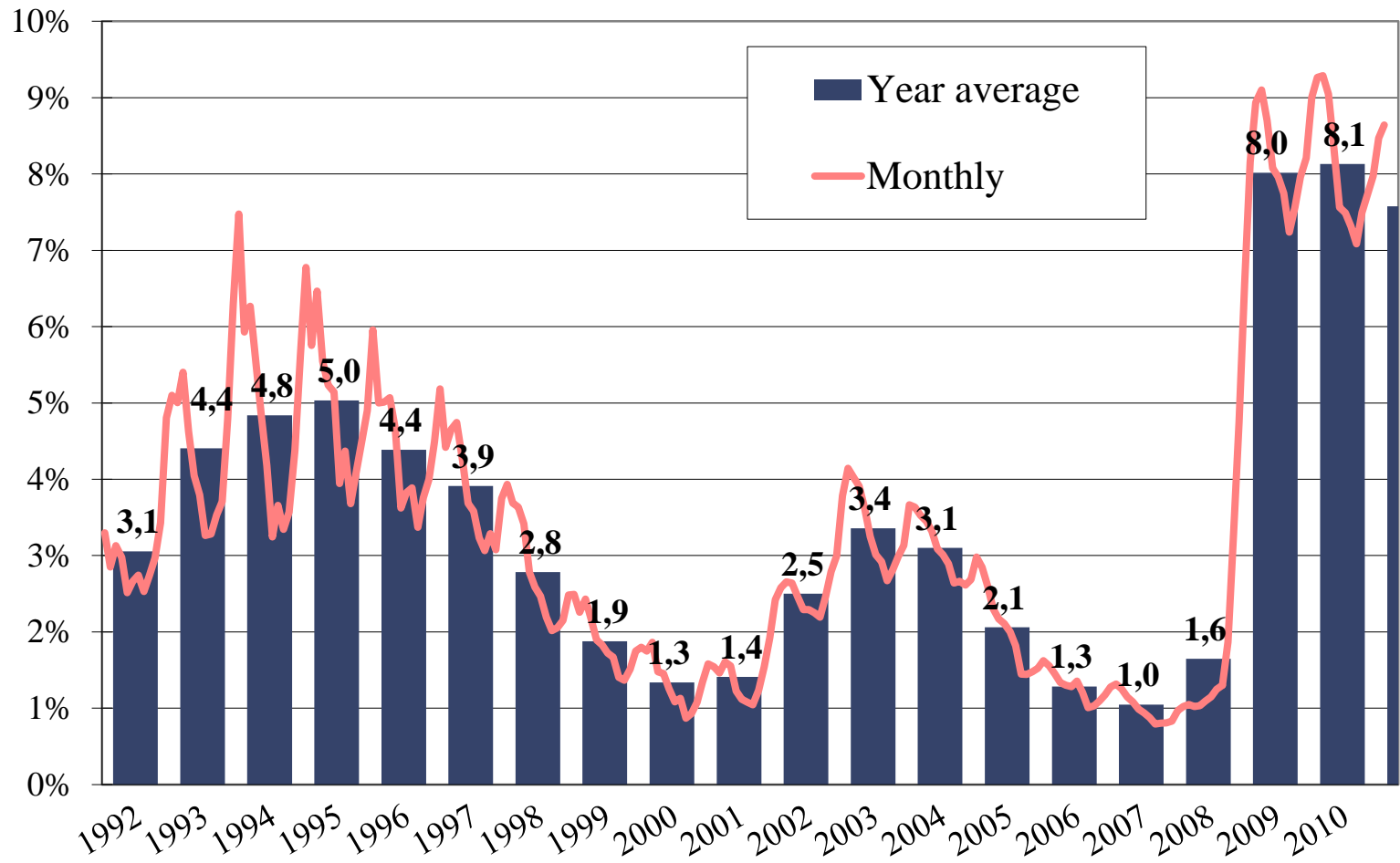
Source: Statistics Iceland

Atvinnugreinaskipting 2010

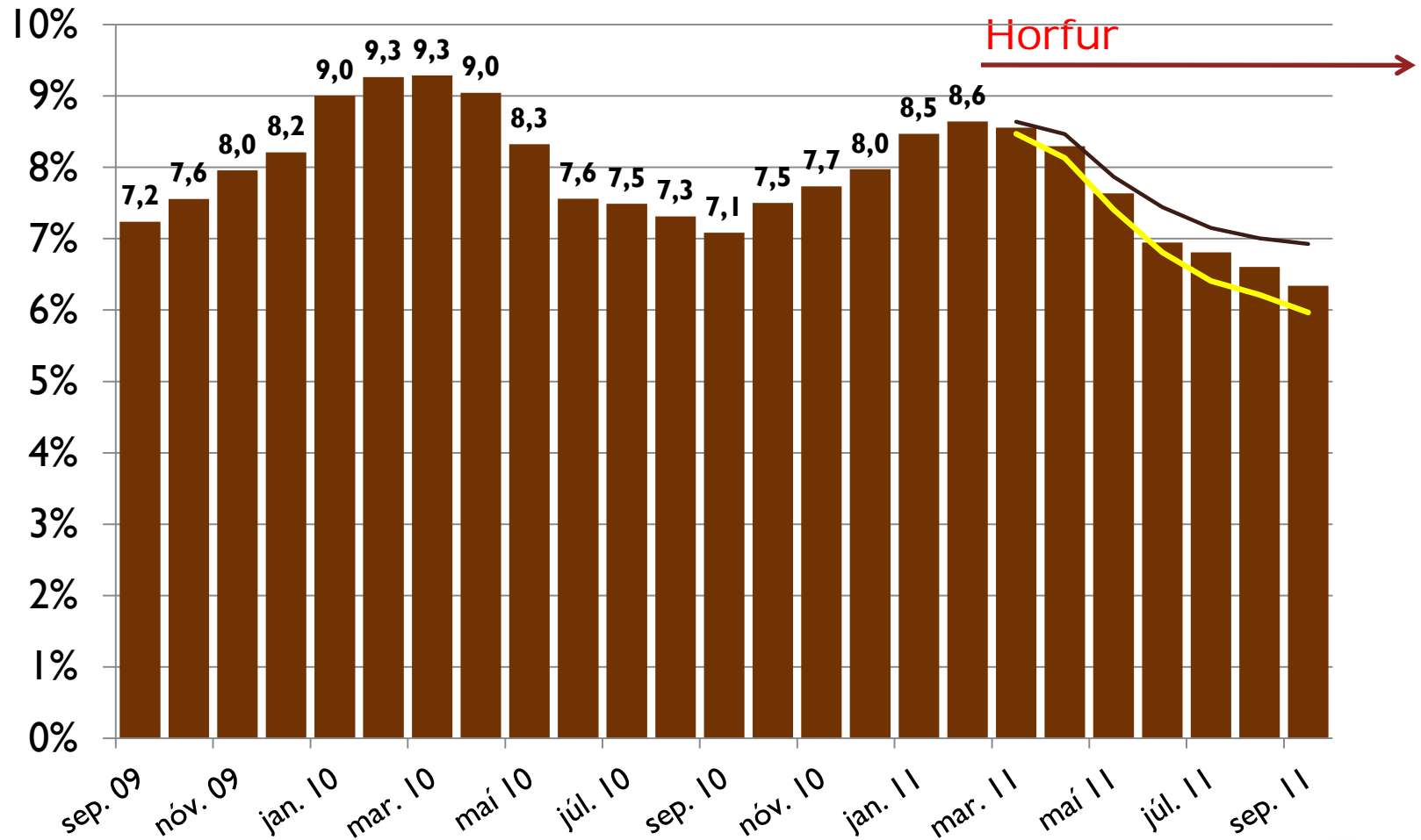


Source: Statistics Iceland

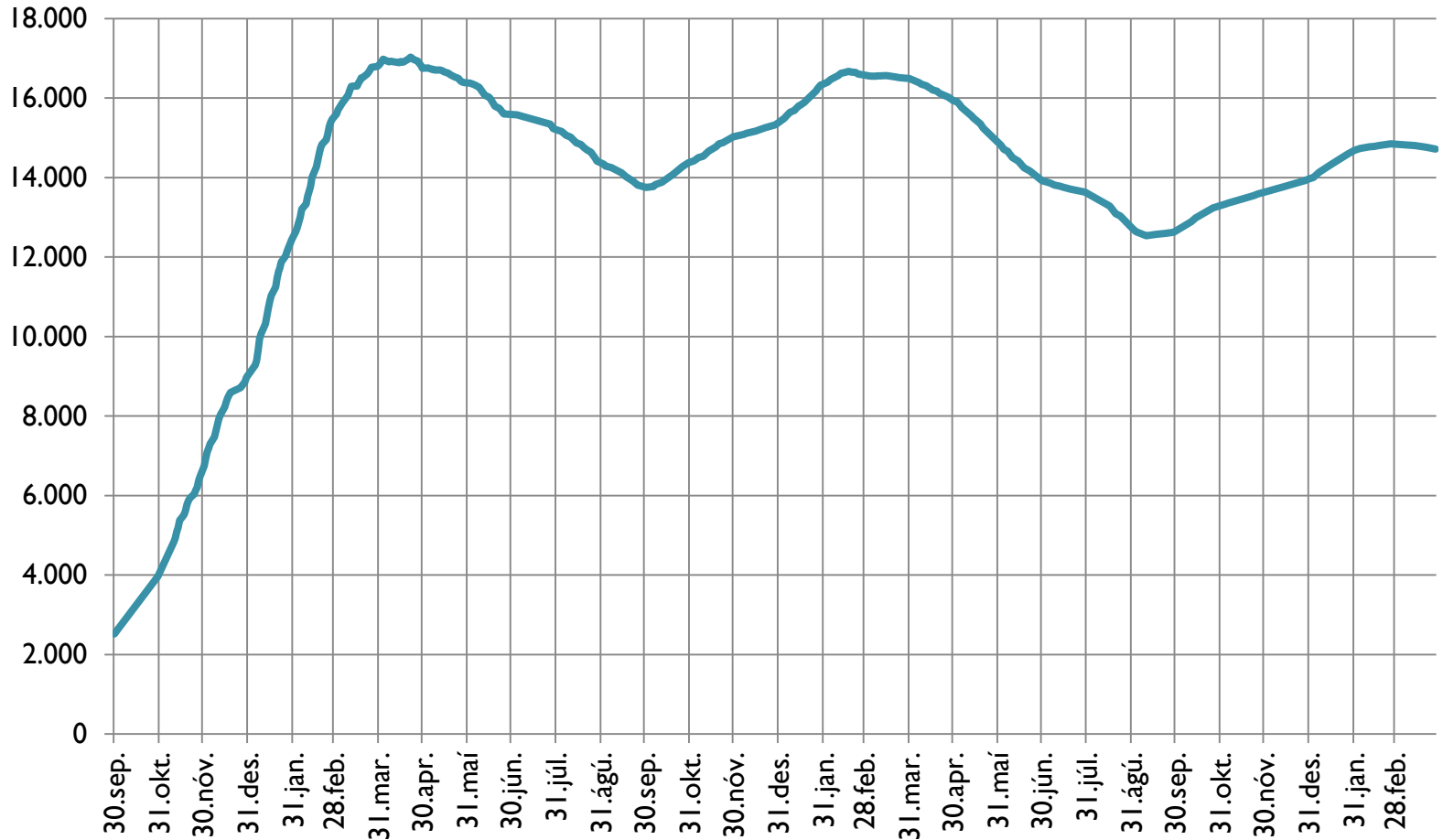
Atvinnuleysi 1992-2010 (skráð)



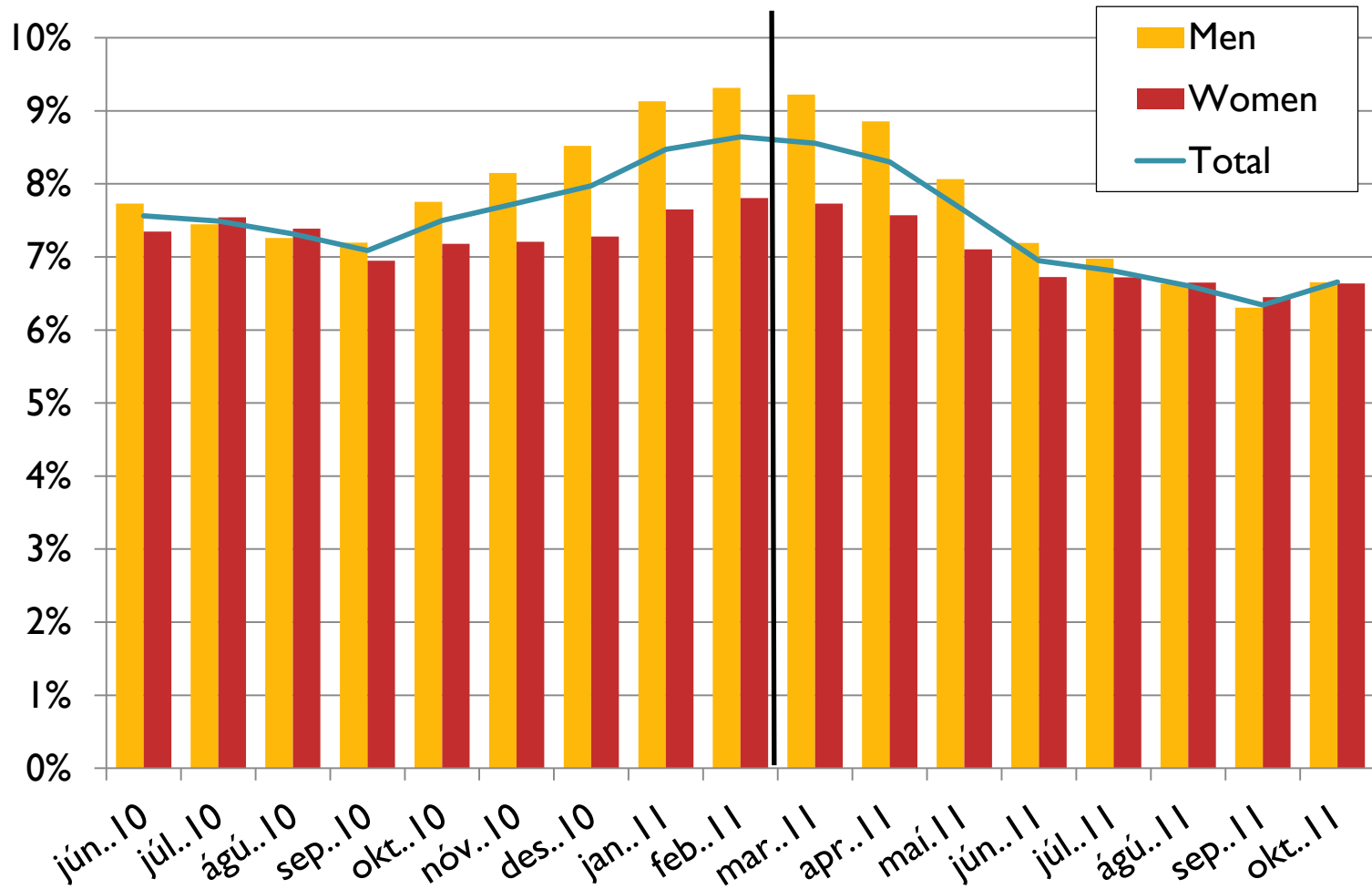
Atvinnuleysi síðustu mánuði og horfur



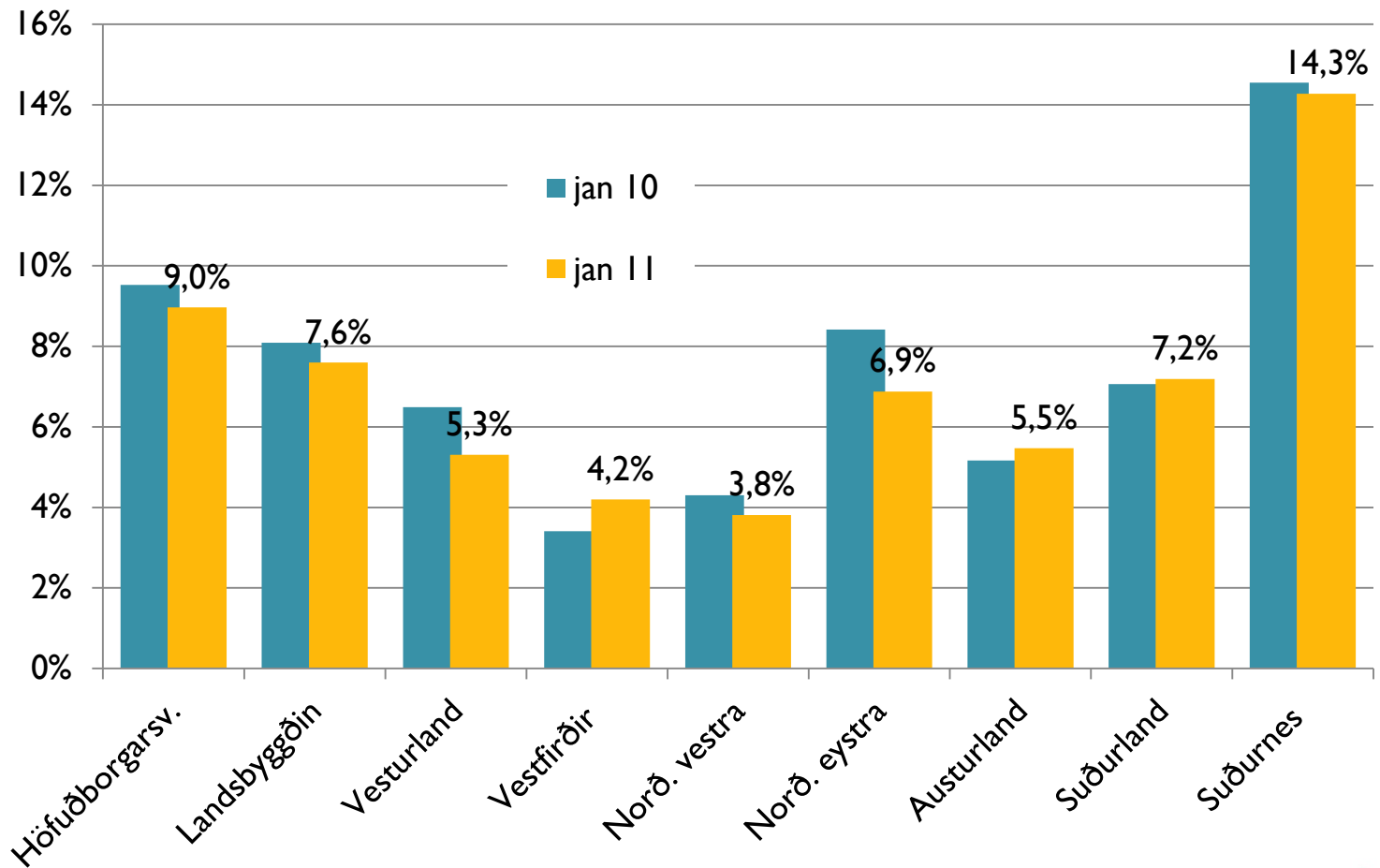
Dagleg skráning atvinnuleysis



Atvinnuleysi eftir kyni



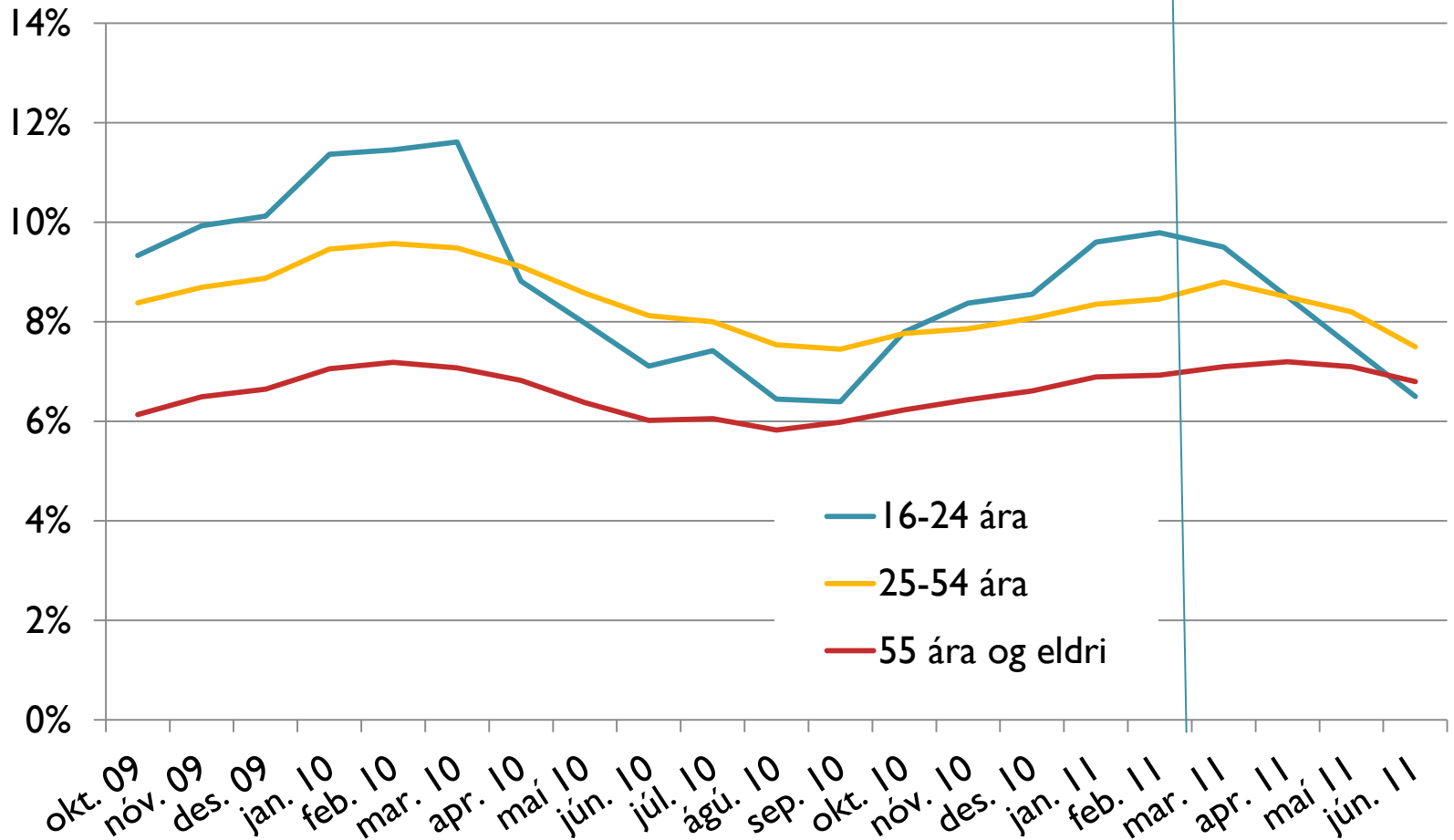
Atvinnuleysi eftir búsetu í janúar '11



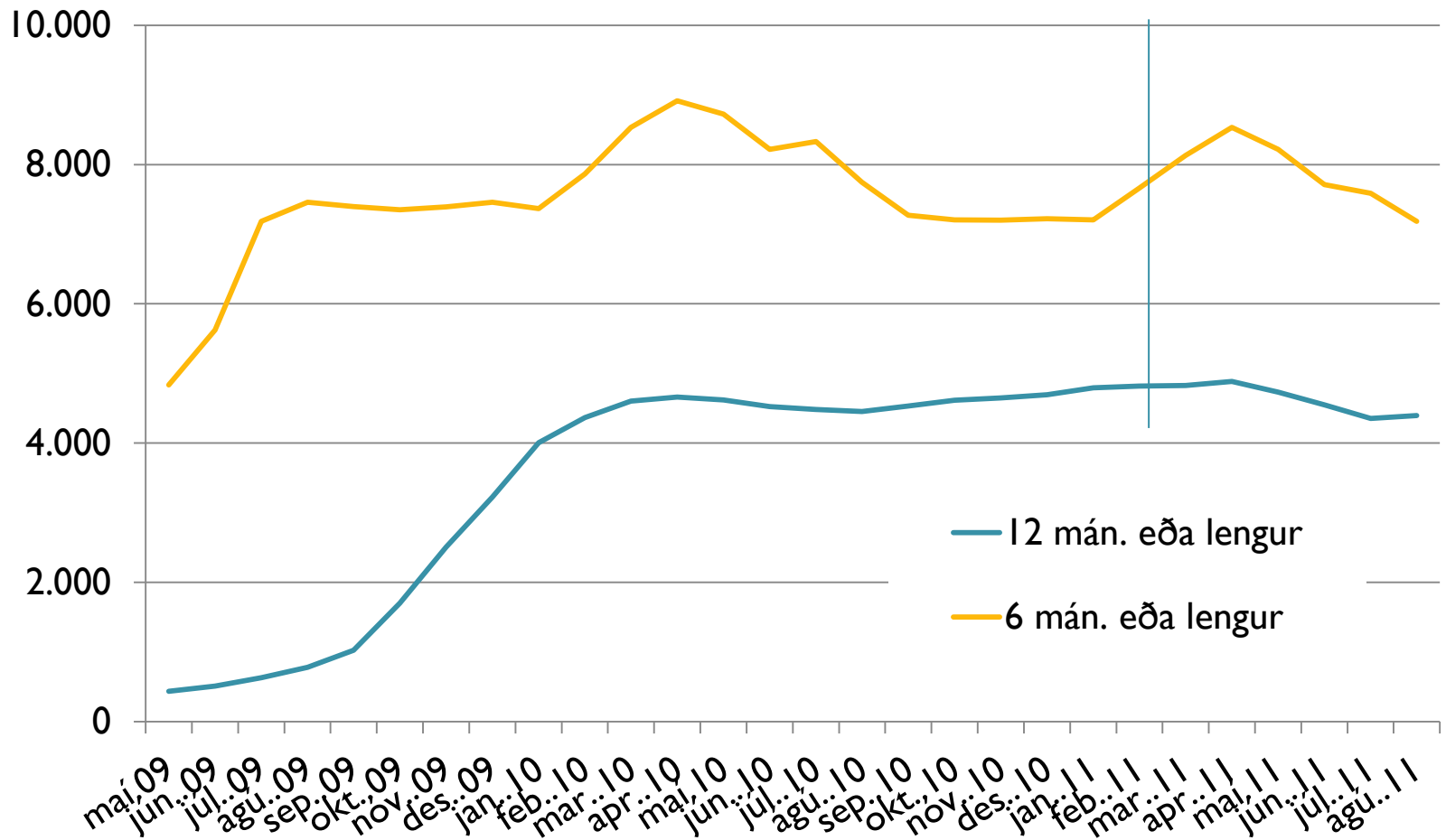
Atvinnuleysi eftir atvinnugreinum

	Febr. 2011	Aug. 2010
Agriculture	4%	3%
Fishing	10%	7%
Fish processing	13%	9%
Manufacturing	9%	7%
Electricity & water supply	8%	5%
Construction	17%	12%
Wholesale, retail trade	11%	10%
Transport	12%	8%
Hotels, restaurants	12%	8%
Communication	8%	9%
Financial intermediation	4%	4%
Specialist services	7%	7%
Other services	12%	9%
Social work, associations, artists	8%	6%
Public administration	2%	1%
Education	2%	2%
Health services, social work	3%	2%

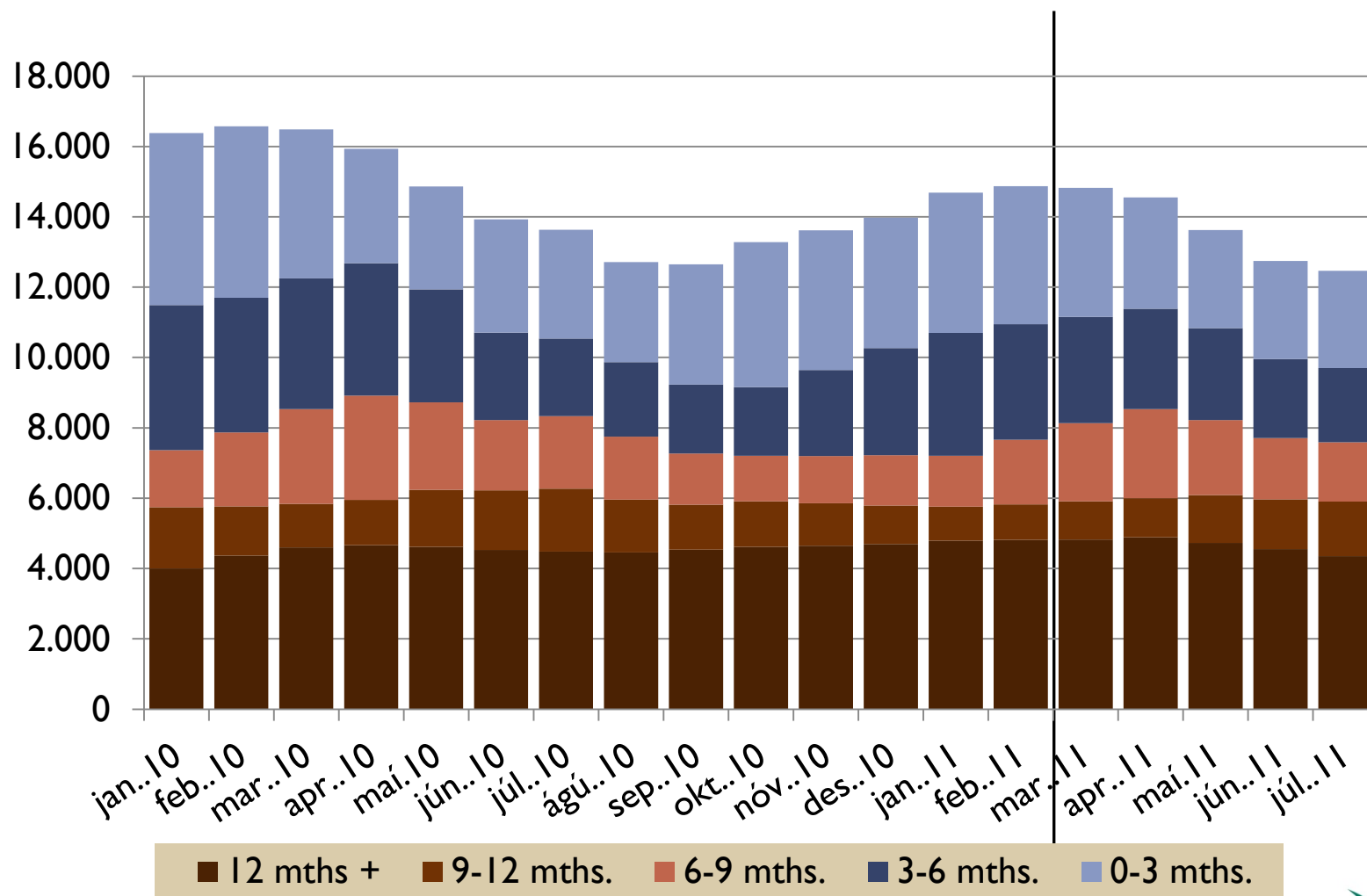
Atvinnuleysi eftir aldri



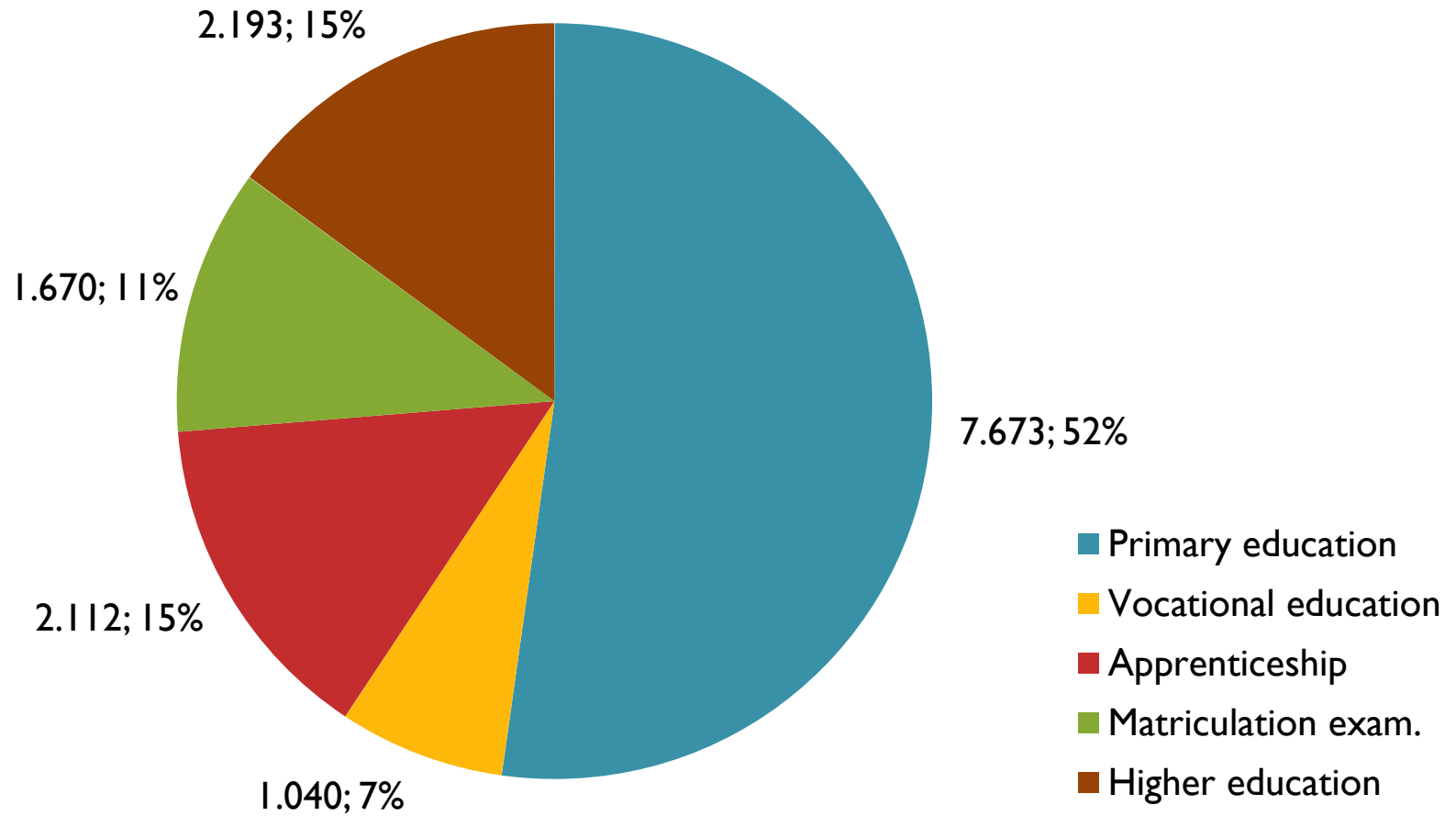
Þróun langtímaatvinnuleysis og horfur næstu mánuði



Atvinnuleysi eftir lengd á skrá

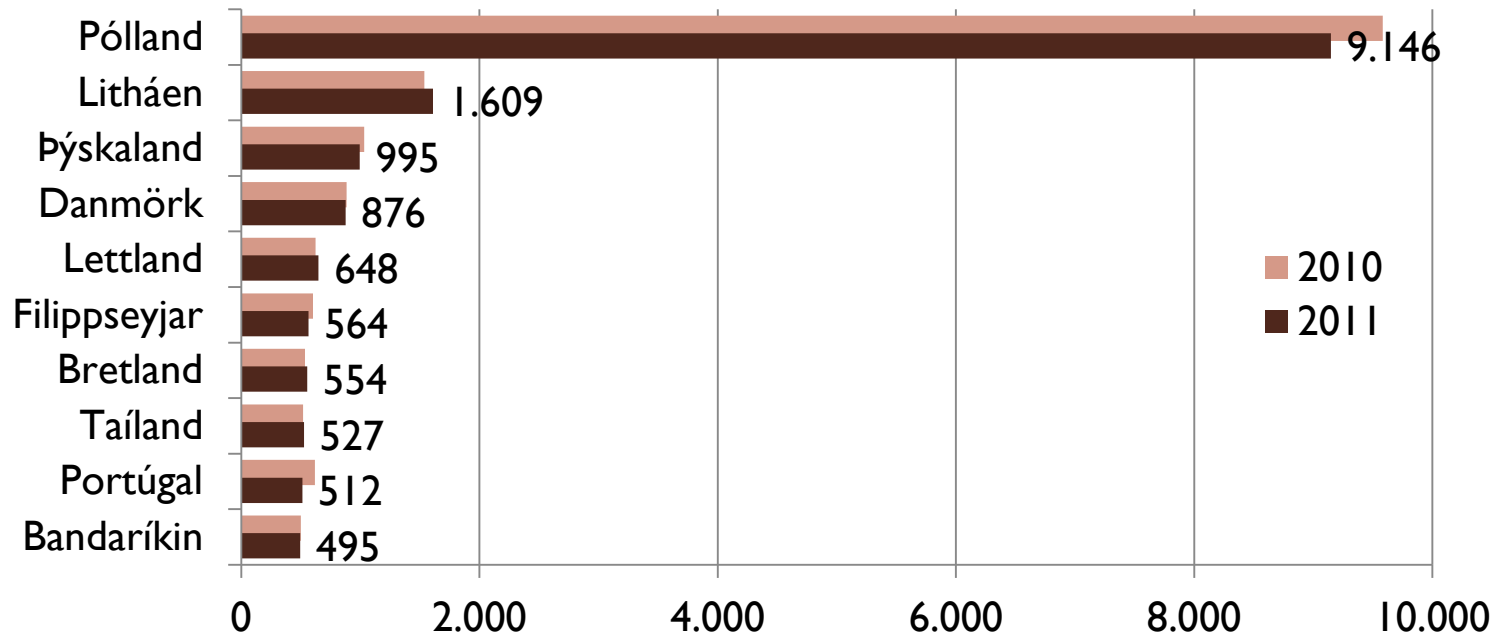


Menntun atvinnulausra í janúar 2011

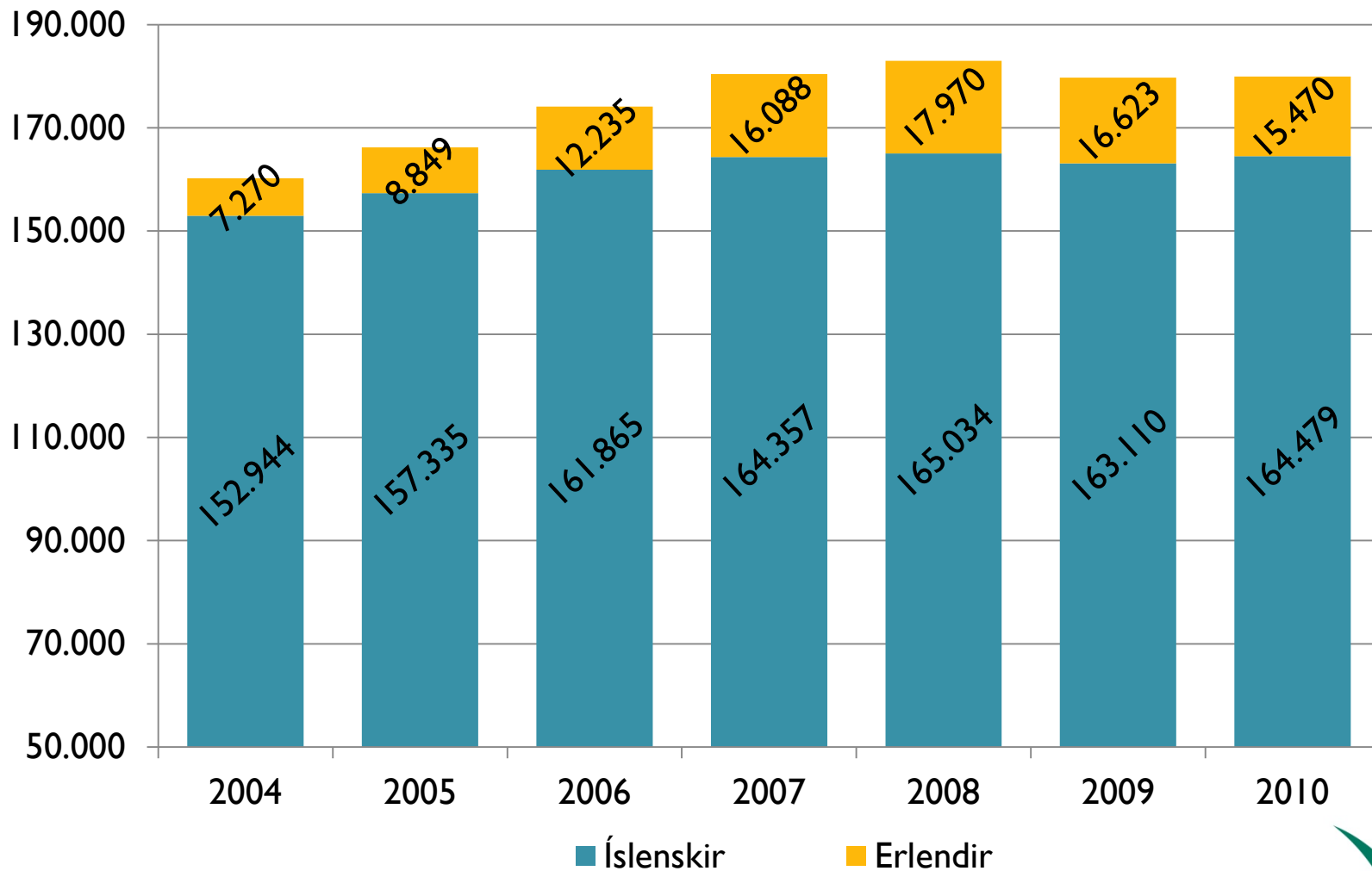


Fjöldi erlendra ríkisborgara á Íslandi

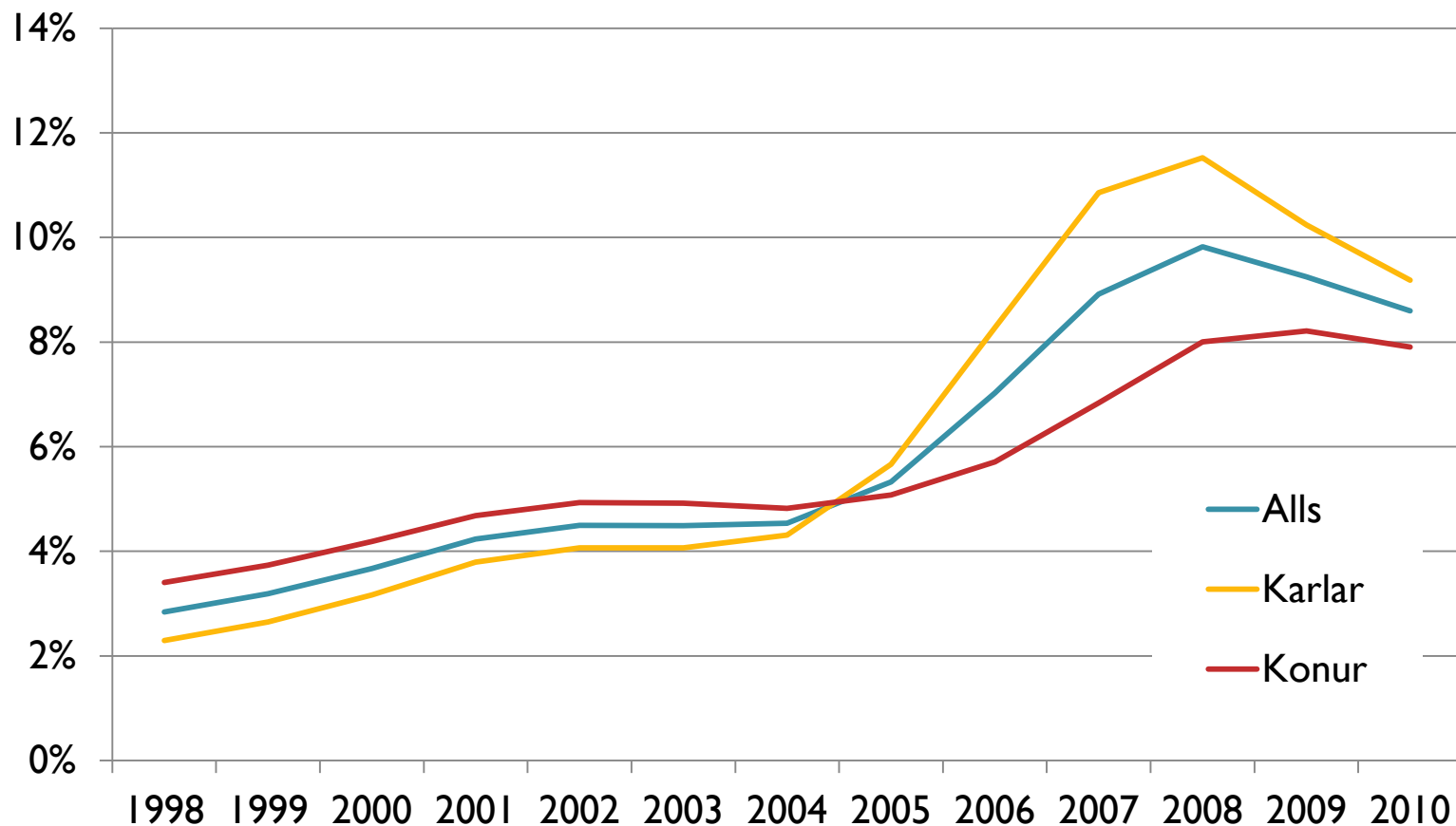
- Um **21.100** þann 1. janúar 2011, 11.000 karlar, 10.100 konur. 6,6% mannfjöldans.
- Þróunin: Nálægt 5.000 á árunum 1995-2000, um 10.000 milli 2001-2005. Aukning jafnt og þétt síðan til 1. jan. 2009 (24.000).
- 17.900 á aldrinum 16-70 ára (vinnualdur), eða 8,1% af heildarmannfjölda í þeim aldurshópi



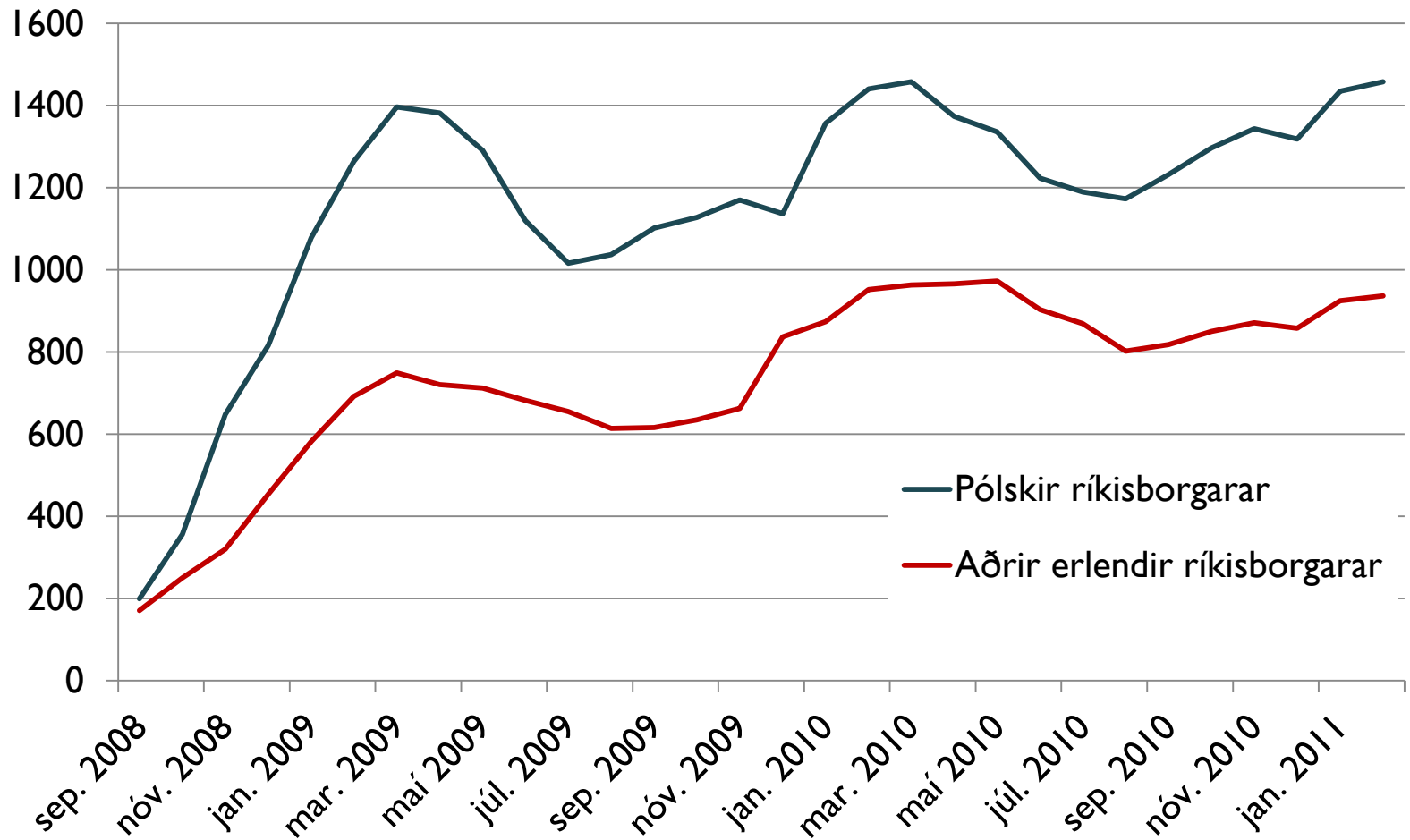
Erlent vinnuafli að jafnaði áætlað út frá mannfjöldatölum



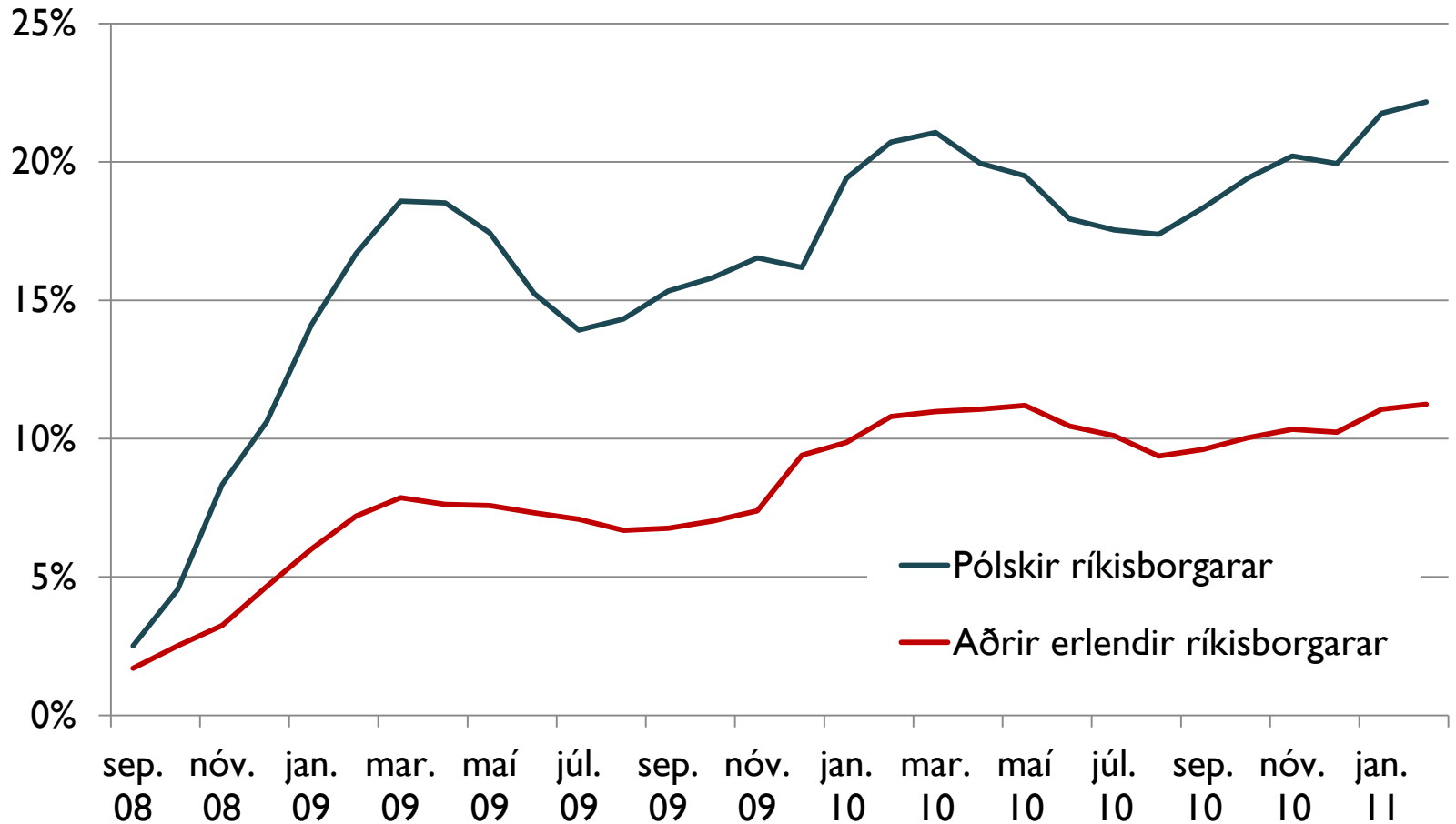
Erlent vinnuafli sem hlutfall af heildarvinnuafli (allir, karlar, konur)



Fjöldi atvinnulausra erlendra ríkisborgara síðustu 3 ár



Áætlað atvinnuleysi meðal erlendra ríkisborgara síðustu



Áætlað atvinnuleysi meðal erlendra ríkisborgara síðustu 10 ár

